

MLS# 10015400

106 Missouri Ave., Rhineland, MO 65069

~~\$62,900.~~ **\$56,900.**

Vickie Oelschaeger Real Estate, LLC

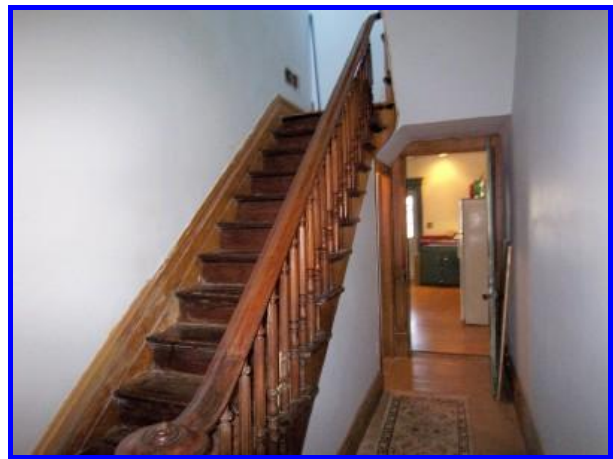
105 E. Fourth St., Hermann, MO 65041

Phone: 573-486-5433 Fax: 573-486-3608

Web: www.vickieoelschlaegerrealestate.comEmail: vickiesells@centurytel.net

"Where a little extra effort makes a BIG difference"

County	Montgomery	House-Style	1.5 Story	Range/Oven	Included
Lot Size Aprox.	9858 sq. ft.	Age	120 yrs	Refrig.	Included
School	Hermann R-1	Square Feet	1571	Dishwasher	Included
Taxes	\$486.	Type Heat	Propane f.air		
Storage Bldg.		Cooling	central		
		Bathrooms	2.75	Directions: From I-70 and Hwy 19 in Montgomery County, South on Hwy 19, to West on Hwy 94 to right in Holzum Dr. Follow to Elsenraat to right on Missouri Dr. to property on right.	
Parking	Covered	Living Room			
Basement	Full, pt finished	Family room			
Fireplace	Non-fuctional	Kitchen			
Water	Public	Dining room			
Sewer	Public	Bedrooms			
Possession	At closing	Laundry			



Information herein is not warranted and subject to change without notice. We assume no liability for errors.

